

INDUSTRIAL COMPUTING



Visualize



Edge Computing

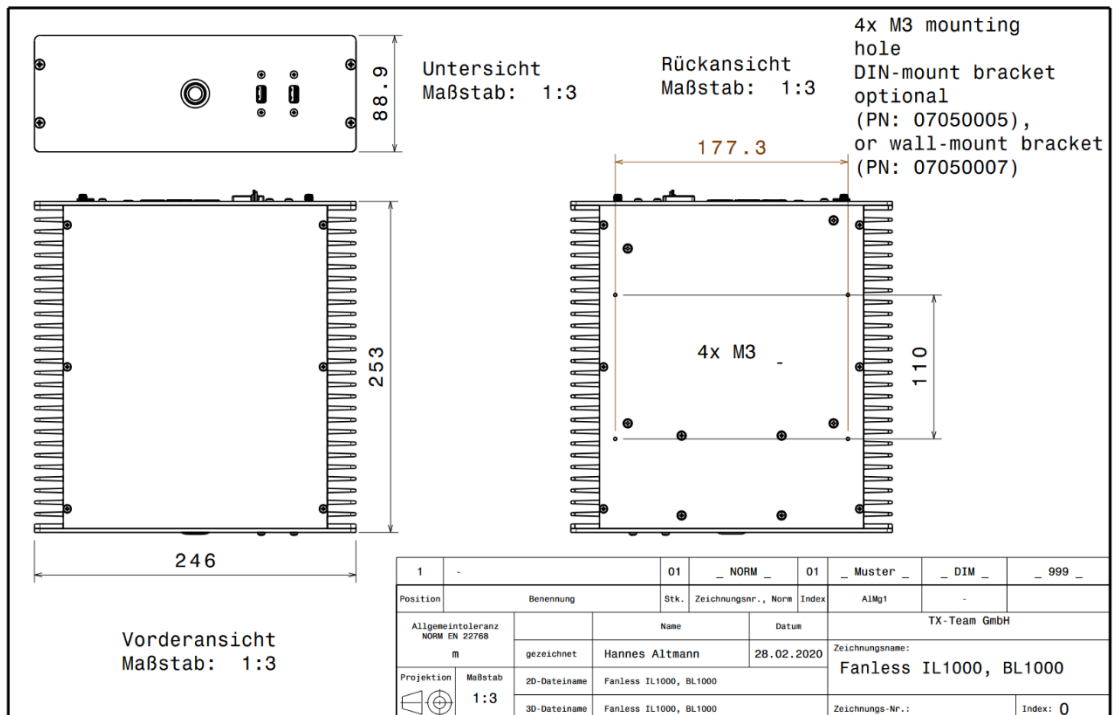


# Fanless IL1050



- Scalable performance: Intel Core Ultra 5, 7 and 9, Intel Xe AI GPU
- 4x GLAN, up to 5x COM, 10x USB
- 3x 8k@60Hz Display Output

Fanless IL1050 is a expandable HighEnd industrial computer with rich I/O setting



IPC  
FANLESS IL1050

PN: TBD

Issued: 06/26  
Status: released

## Factsheet

Physical properties	
Chassis	Full-metal aluminium construction, natural anodized
Dimensions	250x250x88 mm (WxDxH)
Cooling	Passive by heatpipes
Mounting options*	Mounting threads on the bottom, Wallmount bracket
Weight	3,0 kg
Hardware	
Formfactor	Mini-ITX
CPU	Intel Core Ultra 5 225T Intel Core Ultra 7 265T Intel Core Ultra 9 285T
RAM	8, 16, 32, 64, 96 GB DDR5
Storage	2x up to 4TB m.2 SSD + 2x up to 4TB SATA SSD
Graphics	Intel Xe, 1x HDMI, 1x Displayport, 1x USB 4.o/DP alt. mode
Communication	
WLAN*	802.11 b/g/n/ac + Bluetooth or AX module
LTE*	4G / 5G module
Others	-
I/O	
I/O front	2x USB 3.0 (+5x RS232 upon request)
I/O back	8x USB 3.2 gen2, 4x RJ45 (1x Intel GLAN + 3x Intel 2.5GLAN), 1x HDMI, 1x Displayport, 1x USB-C (USB4.0 + Displayport alt. mode), Audio through HDMI
I/O internal**	2x USB 2.0, 2x USB 3.2gen1, 5x RS232, 2x SATA, 1x GPIO (16bit), 1x PCIe x16, 1x m.2 2230, 2x m.2 2280
Power supply	
PSU	150W external adapter
Power input	12V DC-In, PhoenixContact plug Wide DC input and car-pc input optional
Redundancy	Optional
Power draw	Idle: ~8W, full-load: ~120W
Compatibility	
OS	Windows 11 (IoT), Linux
Others	
Environment	
Operating temp. range / Humidity	0..45°C / 10...95%, non-condensing
Protection class	IP50
Compliance	
Conformity	CE, RoHS, REACH
General	
Scope of delivery	IPC, documentation, PSU, certificate of conformity
Language	EN, DE
Long-term-availability	Until 2031
Warranty	3 years, optional 4, 5 years*
Country of Origin	Germany
Tariff code	84715000

\*Depending on actual system configuration / may require optional accessory