

INDUSTRIAL COMPUTING



Visualize



Edge Computing

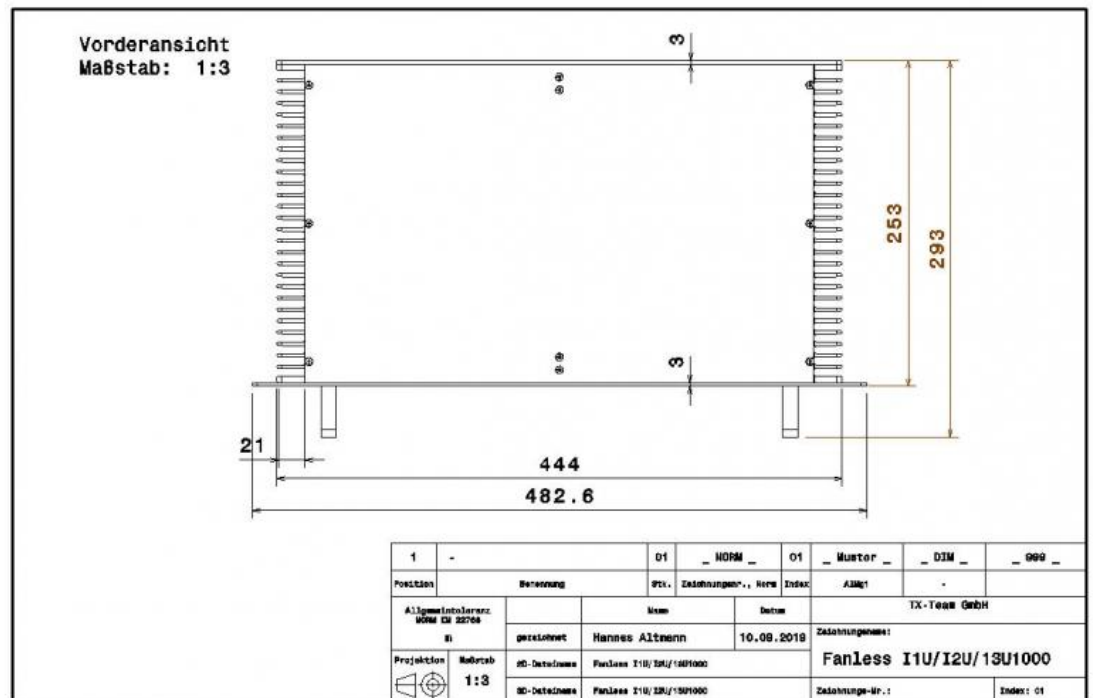


Fanless I4U1000



- Outstanding KI-Performance, nVidia RTX powered
- 4U, 250 mm short-rack
- IPMI 2.0

Fanless I4U1000 is a purpose-built Edge IPC / Edge Server for KI applications and other CPU- and GPU-hungry workloads.



IPC
FANLESS I4U1000

PN: TBD

Issued: 11/24
Status: released

Factsheet

Physical properties	
Chassis	Full-metal aluminium construction, natural anodized
Dimensions	482.6x253x176 mm (WxDxH)
Cooling	Passive by heatpipes
Mounting options*	19"
Weight	6,0 kg
Hardware	
Formfactor	Mini-ITX
CPU	Intel Core i3 14100T Intel Core i5 14500T Intel Core i7 14700T Intel Core i9 14900T
RAM	8, 16, 32, 64, 128 GB DDR4 ECC
Storage	1x 250GB – 4TB m.2, 4x 250GB – 4TB 2.5"
Graphics	Intel HD, 1x HDMI, 2x Displayport, 1x DVI Nvidia RTX A2000 optional 4x mDP
Communication	
WLAN*	-
LTE*	-
Others	Upon request
I/O	
I/O front	2x USB 3.0, 4x 2.5" hotplug bay
I/O back	4x USB 3.2 gen2, 2x RJ 2.5 GLAN, 1x RJ45 dedicated IPMI, 1x HDMI, 1x Displayport, 1x DVI, 1x VGA (IPMI), 2x Audio, 4x USB 2.0, 4x RS232
I/O internal**	1x TPM, 1x PCIe x16, 1x PCIe x8, 1x PCIe X4, 1x m.2 2280/22100
Power supply	
PSU	500W 80+ Platinum
Power input	100-240 VAC
Redundancy	-
Power draw	Idle: ~15W, full-load: ~150W
Compatibility	
OS	Windows 10 / 11 (IoT), Linux, RHEL, SuSE, MS Windows Server
Others	
Environment	
Operating temp. range / Humidity	0..45°C / 10...95%, non-condensing
Protection class	IP50
Compliance	
Conformity	CE, RoHS, REACH
General	
Scope of delivery	IPC, documentation, PSU, certificate of conformity
Language	EN, DE
Long-term-availability	Until 2029 (doesn't apply for graphics card)
Warranty	3 years, optional 4, 5 years*
Country of Origin	Germany
Tariff code	84715000

*Depending on actual system configuration / may require optional accessory