

INDUSTRIAL COMPUTING



DIGITAL SIGNAGE



SERVER-BASED COMPUTING



EMBEDDED

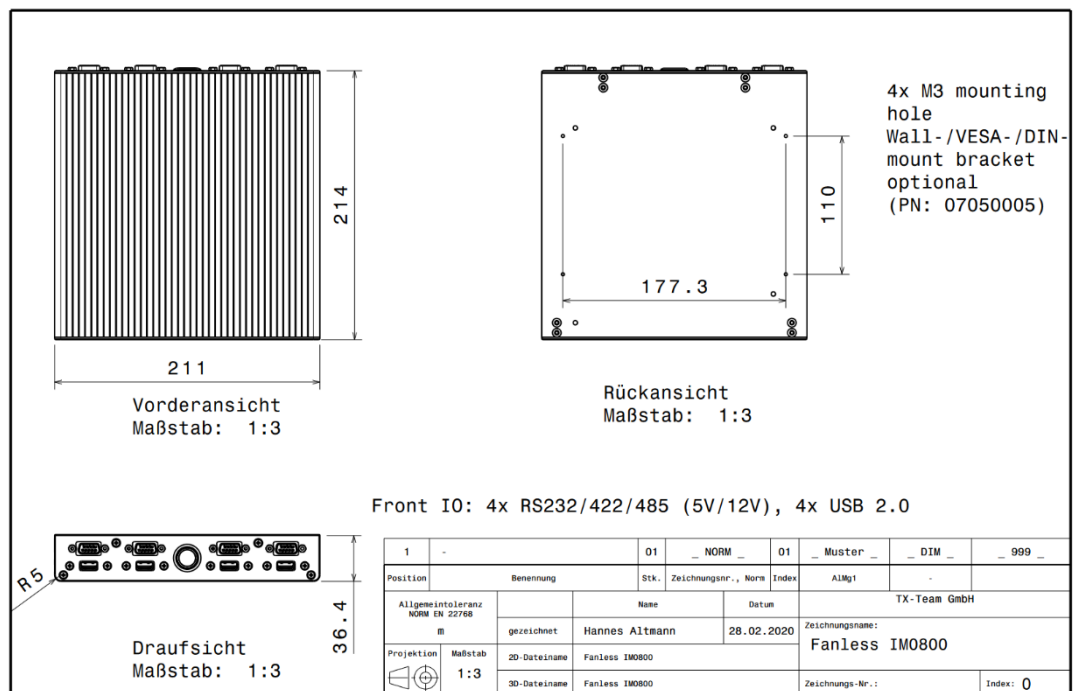


# Fanless IM0900



- Intel Core i3, i5, i7, 13th generation
- Fanless, silent, maintenance-free operation
- USB 3.2, 2.5G LAN, RS232/422/485
- 24V DC-In

Fanless IM0900 is a cost-effective, ultra-flat high performance Embedded Box PC  
Numerous different assembly options are available. The system is prepared for Wall- / VESA and DIN-rail mounting



INDUSTRIAL BOX PC

FANLESS IM0900

PN: 900000487

Issued: 05/24

Status: released

## Factsheet

Physical properties	
Chassis	Full-metal aluminium construction, black anodized
Dimensions	214x211x36,4 mm (WxDxH)
Cooling	Passive
Mounting options*	Mounting threads, DIN-rail, VESA, 19"
Weight	1,5 kg
Hardware	
Formfactor	Thin Mini-ITX
CPU	Intel 300 Intel Core i3 14100 Intel Core i5 14500 Intel Core i7 14700 @30W TDP
RAM	4, 8, 16, 32, 64 GB DDR4
Storage	
Graphics	Intel HD, 1x VGA: full-HD@60Hz, 1x HDMI: full-HD@60Hz
Communication	
WLAN*	802.11 b/g/n/ac + Bluetooth*
LTE*	4G*
Others	Upon request
I/O	
I/O front	2x USB 2.0, 1x RS232, 1x RS232/422/485
I/O back	2x USB 3.2 gen1, 2x USB 3.2 gen2x1, 2x RJ45 GLAN, 1x HDMI, 1x DP, 2x Audio, 1x RS232, 1x RS232/422/485, 1x 12V+19...24V DC-In (5.5x2.5mm barrel plug, screwable)
I/O internal**	1x m.2 2280, 1x m.2 2230, 2x USB 2.0, 1x 8 bit GPIO header, SMB, I <sup>2</sup> C**
Power supply	
PSU	60W external adapter (screwable plug optional)
Power input	12,19...24V DC-In
Redundancy	-
Power draw	Idle: ~8W, full-load: ~35W
Compatibility	
OS	Windows 10 / 11, Linux
Others	-
Environment	
Operating temp. range / Humidity	0...50°C / 10...95%, non-condensing
Protection class	IP50
Compliance	
Conformity	CE, RoHS, REACH
General	
Scope of delivery	IPC, documentation, PSU, certificate of conformity
Language	EN, DE
Long-term-availability	Until 2029
Warranty	3 years, 4/5 years*
Country of Origin	Germany
Tariff code	84715000