

INDUSTRIAL CONTROL



VISUALIZE

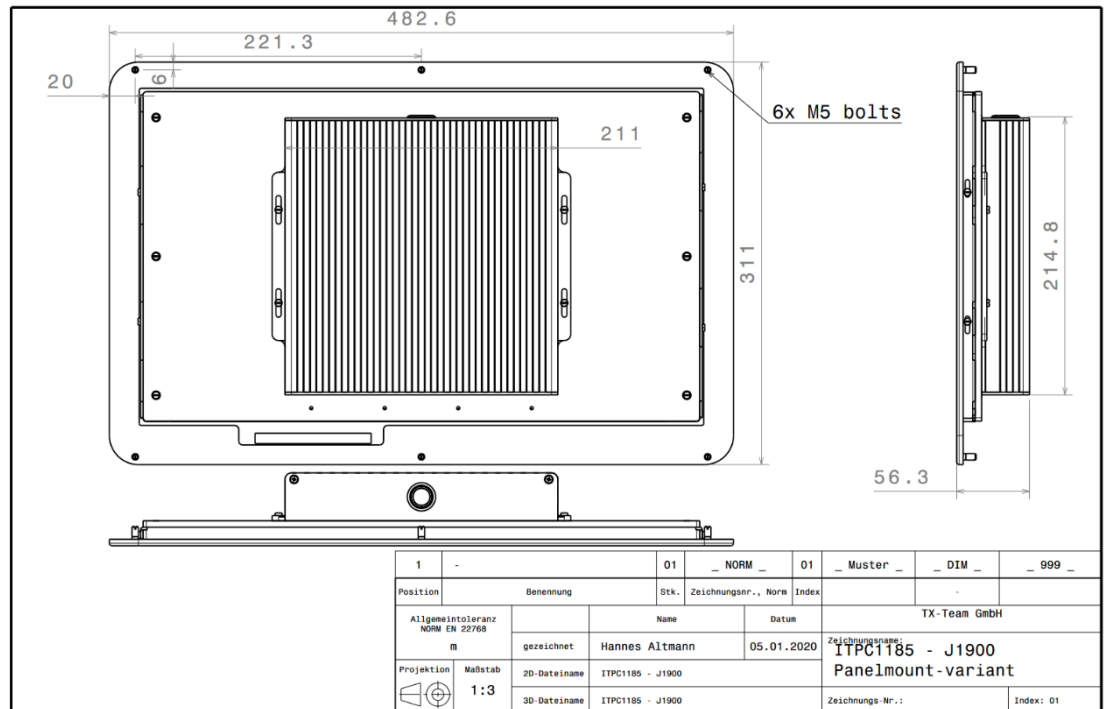


ITPC1185-J1900



- Fanless Panel-PC with Intel Celeron J1900 CPU
- 18.5", Full-HD
- 10point PCAP Touch
- IP65 Front

ITPC1185-J1900 is a state-of-the-art Panel PC. Easy to assemble, running your favourite application under Windows (IoT) or Linux.



Factsheet

Physical properties	
Display & Chassis	18.5" Display, PCAP 10 point Multitouch, 1920x1080px @ 60Hz (Full-HD), 350cd/m ² typ. Brightness, 1000:1 typ. Contrast Full-metal aluminium frame, 5mm thickness, Protective Glassfront (chemical resistant), Front IP65 protected
Dimensions	482,6x311x56,3 mm (WxDxH)
Cooling	Passive
Mounting options*	Panel-mount 19" mount optional, VESA mount optional Easy assembly by only 6 pre-assembled threaded bolts
Weight	4 kg
Hardware	
Formfactor	Thin Mini-HTX
CPU	Intel Celeron J1900, 4x 2.42 GHz
RAM	2, 4, 8, 16 GB DDR3L
Storage	60GB – 2TB m.2
Graphics	Intel HD, 1x VGA: full-HD@60Hz, 1x HDMI: full-HD@60Hz
Communication	
WLAN*	802.11 b/g/n/ac + Bluetooth*
LTE*	4G*
Others	Upon request
I/O	
I/O front	2x USB 2.0
I/O back	1x HDMI, 1x VGA, 4x USB 3.0, 2x RJ45 (Realtek GLAN), 1x RS232, 2x Audio
I/O internal**	1x m.2 2280, 1x m.2 2230, 1x mPCIe/mSATA, 1x RS232, 1x LPT/16 bit GPIO header, SMB, I ² C**
Power supply	
PSU	60W external adapter
Power input	12,19..24V DC-In
Redundancy	-
Power draw	Idle: ~9W, full-load: ~15W
Compatibility	
OS	Windows 7, 8.1, 10, Linux
Others	-
Environment	
Operating temp. range / Humidity	0..50°C / 10...95%, non-condensing
Protection class	IP50
Compliance	
Conformity	CE, RoHS, REACH
General	
Scope of delivery	IPC, documentation, PSU, certificate of conformity
Language	EN, DE
Long-term-availability	Until 2029
Warranty	3 years, 4/5 years*
Country of Origin	Germany
Tariff code	84715000