

INDUSTRIAL CONTROL



VISUALIZE

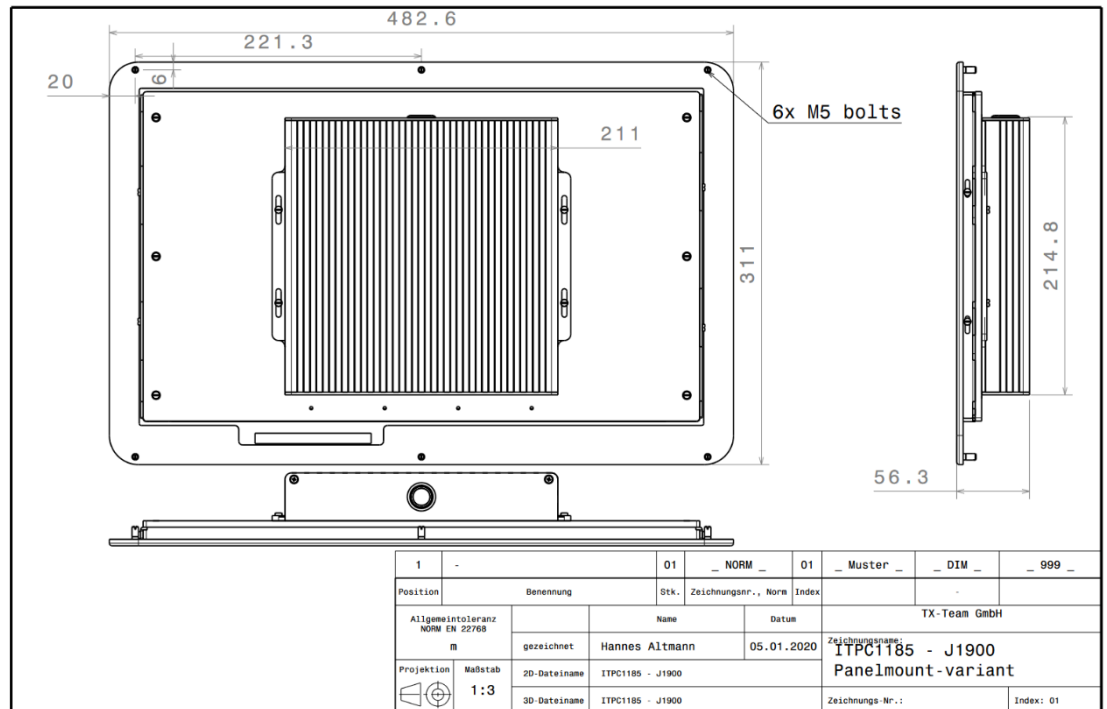


ITPC1185-J1900



- Fanless Panel-PC with Intel Core i3 10100 / i5 10500 CPU
- 18.5", Full-HD
- 10point PCAP Touch
- IP65 Front

ITPC1185-Core-i is a powerful Panel PC. Easy to assemble, running your favourite application under Windows (IoT) or Linux.



INDUSTRIAL Panel-PC

ITPC1185-Core-i

PN: 09030051

Issued: 11/22

Status: released

Factsheet

Physical properties

Display & Chassis	18.5" Display, PCAP 10 point Multitouch, 1920x1080px @ 60Hz (Full-HD), 350cd/m ² typ. Brightness, 1000:1 typ. Contrast Full-metal aluminium frame, 5mm thickness, Protective Glassfront (chemical resistant), Front IP65 protected
Dimensions	482,6x311x56,3 mm (WxDxH)
Cooling	Passive
Mounting options*	Panel-mount 19" mount optional, VESA mount optional Easy assembly by only 6 pre-assembled threaded bolts
Weight	4 kg

Hardware

Formfactor	Thin Mini-ITX
CPU	Intel Core i3 10100 (@35W TDP), 4x 3.0 - 3.8 GHz Intel Core i5 10500 (@35W TDP), 6x 2.3 - 3.8 GHz
RAM	2, 4, 8, 16, 32 GB DDR4
Storage	60GB – 2TB m.2
Graphics	Intel HD, 3x HDMI: 4k@60Hz

Communication

WLAN*	802.11 b/g/n/ac + Bluetooth*
LTE*	4G*
Others	Upon request

I/O

I/O front	2x USB 2.0
I/O back	4x USB 3.0, 2x RJ45 GLAN, 3x HDMI, 2x Audio
I/O internal**	4x USB 2.0, 1x LVDS, 3 RS232, 1x RS232/422/485, 2x SATA, 1x mPCIe, 4x GPIO, 1x I2C/Smbus, 1x m.2 2230

Power supply

PSU	75W external adapter
Power input	12V DC-In, 5.5 x2.5 mm barrel plug
Redundancy	-
Power draw	Idle: ~9W, full-load: ~45W

Compatibility

OS	Windows 7, 8.1, 10, 11, Linux
Others	-

Environment

Operating temp. range / Humidity	0..50°C / 10...95%, non-condensing
Protection class	IP50

Compliance

Conformity	CE, RoHS, REACH
------------	-----------------

General

Scope of delivery	IPC, documentation, PSU, certificate of conformity
Language	EN, DE
Long-term-availability	Until 2029
Warranty	3 years, 4/5 years*