

INDUSTRIAL CONTROL



VISUALIZE

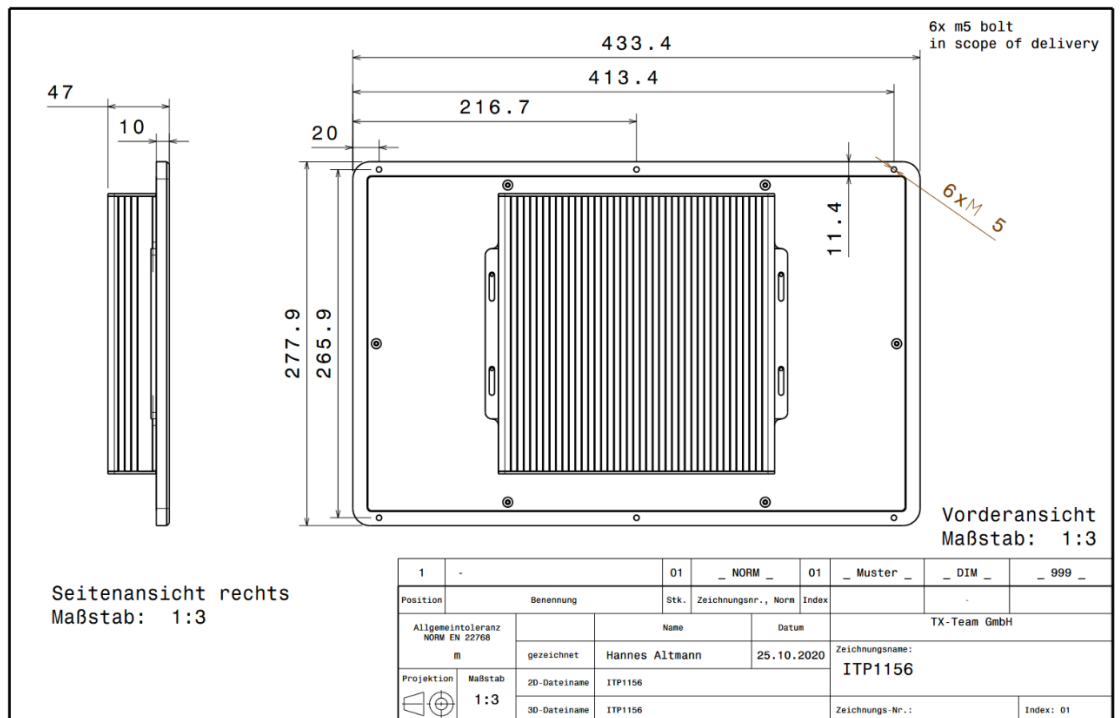


ITPC1156



- Fanless industrial Touchpanel Display
- 15.6", Full-HD
- 10point PCAP Touch
- IP65 Front

ITP1156 is a 15.6" industrial Touchpanel PC with Displayport and HDMI output



Factsheet

Physical properties

Display & Chassis	15.6" Display, PCAP 10 point Multitouch, 1920x1080px @ 60Hz (Full-HD), 250cd/m ² typ. Brightness, 700:1 typ. Contrast Full-metal aluminium frame, 10mm thickness, Protective Glassfront (chemical resistant), Front IP65 protected
Dimensions	433,4 x 277,9 x47 mm (WxDxH)
Cooling	Passive
Mounting options*	Panel-mount VESA mount optional Easy assembly by only 6 pre-assembled threaded bolts
Weight	3 kg

Hardware

Formfactor	proprietary
CPU	n.a.
RAM	n.a.
Storage	n.a.
Graphics	n.a.

Communication

WLAN*	n.a.
LTE*	n.a.
Others	n.a.

I/O

I/O front	-
I/O back	1x Displayport, 1x HDMI, 1x DC-In, 1x USB cable (1.8m, type A) for Touchpanel
I/O internal**	-

Power supply

PSU	60W external adapter
Power input	12V DC-In, 5.5 x2.5 mm barrel plug
Redundancy	-
Power draw	Idle: ~1W, full-load: ~7W

Compatibility

OS	n.a.
Others	-

Environment

Operating temp. range / Humidity	0..50°C / 10...95%, non-condensing
Protection class	IP50

Compliance

Conformity	CE, RoHS, REACH
------------	-----------------

General

Scope of delivery	Display, documentation, PSU, certificate of conformity
Language	EN, DE
Long-term-availability	Until 2029
Warranty	3 years, 4/5 years*
Country of Origin	Germany
Tariff code	84715000