

INDUSTRIAL COMPUTING



Visualize



Edge Computing



Fanless IM1250

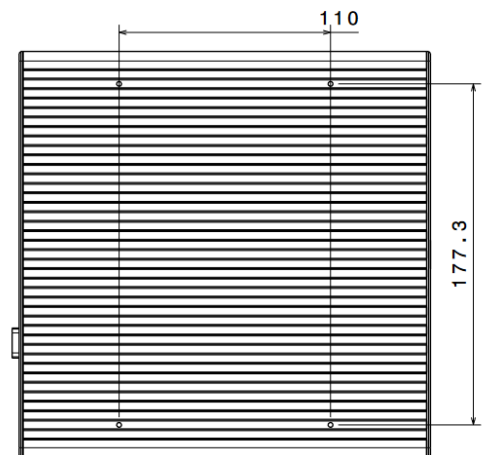


- Scalable performance: Intel Core i3, i5, i7
- Dual GLAN
- Up to 4x RS232 (422/485) optional

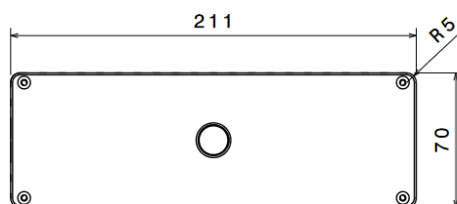


4x M3 on the bottom
depth: 3 mm

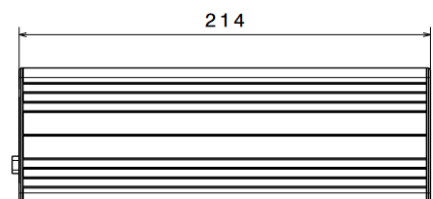
Fanless IM1250 is a solid and reliable general purpose fanless IPC



Untersicht
Maßstab: 1:2



Seitenansicht rechts
Maßstab: 1:2



Vorderansicht
Maßstab: 1:2

IPC
FANLESS IM1250

PN: 09030057

Issued: 03/23
Status: released

Factsheet

Physical properties	
Chassis	Full-metal aluminium construction, black anodized
Dimensions	214x211x70 mm (WxDxH)
Cooling	Passive by heatpipes
Mounting options*	Mounting threads on the bottom, DIN-rail, VESA, wall, 19" bracket
Weight	2,0 kg
Hardware	
Formfactor	Mini-ITX
CPU	Intel Core i3 10100 (@35W TDP), 4x 3.0 - 3.8 GHz Intel Core i5 10500 (@35W TDP), 6x 2.3 - 3.8 GHz Intel Core i7 10700 (@35W TDP), 8x 2.0 - 4.5 GHz
RAM	4, 8, 16, 32 GB DDR4
Storage	1x 60GB – 1TB m.2, 2x 250GB – 2TB 2.5"
Graphics	Intel HD, 1x HDMI 2.0, 2x HDMI 1.4a
Communication	
WLAN*	802.11 b/g/n/ac + Bluetooth
LTE*	4G / 5G module
Others	-
I/O	
I/O front	- up to 2x USB 2.0 + 3x RS232 + 1x RS232/422/485
I/O back	4x USB 3.0, 2x RJ GLAN, 3x HDMI, 2x Audio
I/O internal**	4x USB 2.0, 1x LVDS, 3 RS232, 1x RS232/422/485, 2x SATA, 1x mPCIe, 4x GPIO, 1x I2C/Smbus, 1x m.2 2230
Power supply	
PSU	60W external adapter
Power input	12V DC-In, 5.5x2.5 mm barrel plug, optional: PhoenixContact plug Wide DC input optional
Redundancy	-
Power draw	Idle: ~10W, full-load: ~45W
Compatibility	
OS	Windows 10 / 11 (IoT), Linux
Others	
Environment	
Operating temp. range / Humidity	0..50°C / 10...95%, non-condensing
Protection class	IP50
Compliance	
Conformity	CE, RoHS, REACH
General	
Scope of delivery	IPC, documentation, PSU, certificate of conformity
Language	EN, DE
Long-term-availability	Until 2025
Warranty	3 years, optional 4, 5 years*
Country of Origin	Germany
Tariff code	84715000

*Depending on actual system configuration / may require optional accessory

**Maybe occuring due to actual system configuration