

INDUSTRIAL COMPUTING



DIGITAL SIGNAGE



SERVER-BASED COMPUTING



EMBEDDED



## Fanless IM0800 & IM0810

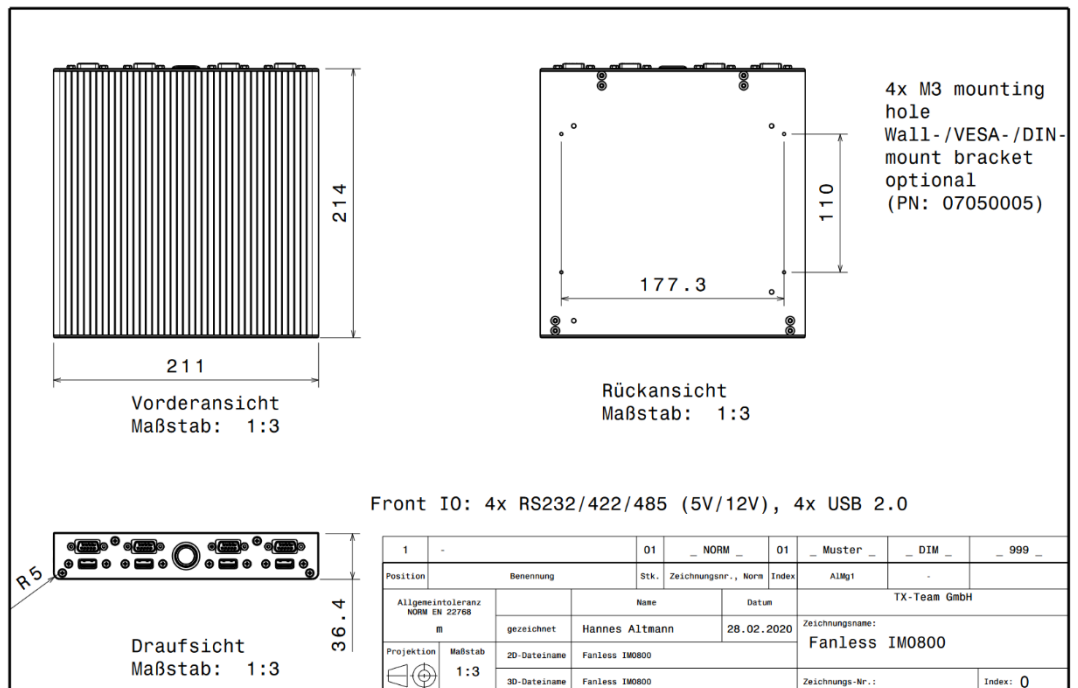


- Compact and energy-efficient system design
- Fanless, silent, maintenance-free operation
- Up to 5x RS232/422/485 + 8x USB
- Ultra-flat: Only 36.4 mm in height

Fanless IM0800 is a cost-effective, ultra-flat Embedded Box PC

Fanless IM0810 is a cost-effective networking appliance

Numerous different assembly options are available. The system is prepared for Wall- / VESA and DIN-rail mounting



INDUSTRIAL BOX PC/  
Networking Appliance

FANLESS IM0800  
PN: 09030037

FANLESS IM0810  
PN: 09040014

Issued: 11/22  
Status: released

## Factsheet

Physical properties	
Chassis	Full-metal aluminium construction, black anodized
Dimensions	214x211x36,4 mm (WxDxH)
Cooling	Passive
Mounting options*	Mounting threads, DIN-rail, VESA
Weight	0,8 kg
Hardware	
Formfactor	Thin Mini-HTX
CPU	Intel Celeron J1900, 4x 2.42 GHz
RAM	2, 4, 8, 16 GB DDR4
Storage	60GB – 2TB m.2
Graphics	Intel HD, 1x VGA: full-HD@60Hz, 1x HDMI: full-HD@60Hz
Communication	
WLAN*	802.11 b/g/n/ac + Bluetooth*
LTE*	4G*
Others	Upon request
I/O	
I/O front	<b>IM0800:</b> 2x RS232/422/485 + 2x RS232 (5V/12V), 4x USB 2.0 * <b>IM0810:</b> 2x USB 2.0, 2x RJ45GLAN *
I/O back	1x HDMI, 1x VGA, 4x USB 3.0, 2x RJ45 (Realtek GLAN), 1x RS232, 2x Audio
I/O internal**	1x m.2 2280, 1x m.2 2230, 1x mPCIe/mSATA, 1x RS232, 1x LPT/16 bit GPIO header, SMB, I <sup>2</sup> C**
Power supply	
PSU	60W external adapter
Power input	12,19..24V DC-In
Redundancy	-
Power draw	Idle: ~9W, full-load: ~15W
Compatibility	
OS	Windows 7, 8.1, 10, Linux
Others	-
Environment	
Operating temp. range / Humidity	0..50°C / 10..95%, non-condensing
Protection class	IP50
Compliance	
Conformity	CE, RoHS, REACH
General	
Scope of delivery	IPC, documentation, PSU, certificate of conformity
Language	EN, DE
Long-term-availability	Until 2029
Warranty	3 years, 4/5 years*
Country of Origin	Germany
Tariff code	84715000

\*Depending on actual system configuration / may require optional accessory

\*\*Maybe occupied due to actual system configuration